



The Continuum of Care for the Multiple Myeloma Patient

Chairs: K.C. Anderson and M. Boccadoro

Wednesday 4 May 2011
10:30–12:30
Paris, France



A Celgene-sponsored satellite symposium
at the 13th International Myeloma Workshop



Disclaimer

You are about to attend a scientific disclosure and exchange session which may present certain products and/or indications not yet registered and/or approved. Always refer to the product SmPC before prescribing.

This symposium is intended, and should be interpreted, as an information session on scientific progress and latest developments and is not intended, in any manner, as a promotional event or any kind of inducement to prescribe or use any medicinal product(s).

This meeting is sponsored by Celgene.

Housekeeping notes

- Please turn off your mobile phone
- Questions after each presentation
- Please hand in the evaluation form

**Satellite Symposium
Evaluation Form**
Your feedback is extremely valuable to us

Please indicate your profession

<input type="checkbox"/> Physician	<input type="checkbox"/> Nurse	<input type="checkbox"/> Pharmacist
<input type="checkbox"/> Scientist	<input type="checkbox"/> Pharmaceutical industry	<input type="checkbox"/> Other

Please rate the following on a scale from 1 to 5
1 = poor 2 = below average 3 = average 4 = good 5 = excellent

1. Overall quality of the meeting
1 2 3 4 5


2. Scientific content of the meeting
1 2 3 4 5

3. How well did this symposium meet your personal objectives/expectations?
1 2 3 4 5

4. Additional comments

Thank you for completing this evaluation form

Please leave the completed form on your chair upon leaving
the meeting, or hand it to any of the meeting staff



The continuum of care for the multiple myeloma patient

- | | |
|--------------------|---|
| 10:30–10:45 | The changing dynamic of multiple myeloma treatment
<i>M. Boccadoro (Italy)</i> |
| 10:45–11:05 | Mechanisms of action and disease: intercellular events and immunomodulation
<i>S. Lentzsch (USA)</i> |
| 11:05–11:25 | Mechanisms of action and disease: immune synapse
<i>D.M. Davis (UK)</i> |
| 11:25–11:45 | Optimizing current therapeutic options for relapsed/refractory multiple myeloma
<i>M.A. Dimopoulos (Greece)</i> |
| 11:45–12:05 | The evidence supporting continuous therapy in multiple myeloma
<i>S. Giralt (USA)</i> |
| 12:05–12:25 | From bench to bedside: combination regimens in the present and future management of multiple myeloma
<i>K.C. Anderson (USA)</i> |

The changing dynamic of multiple myeloma treatment

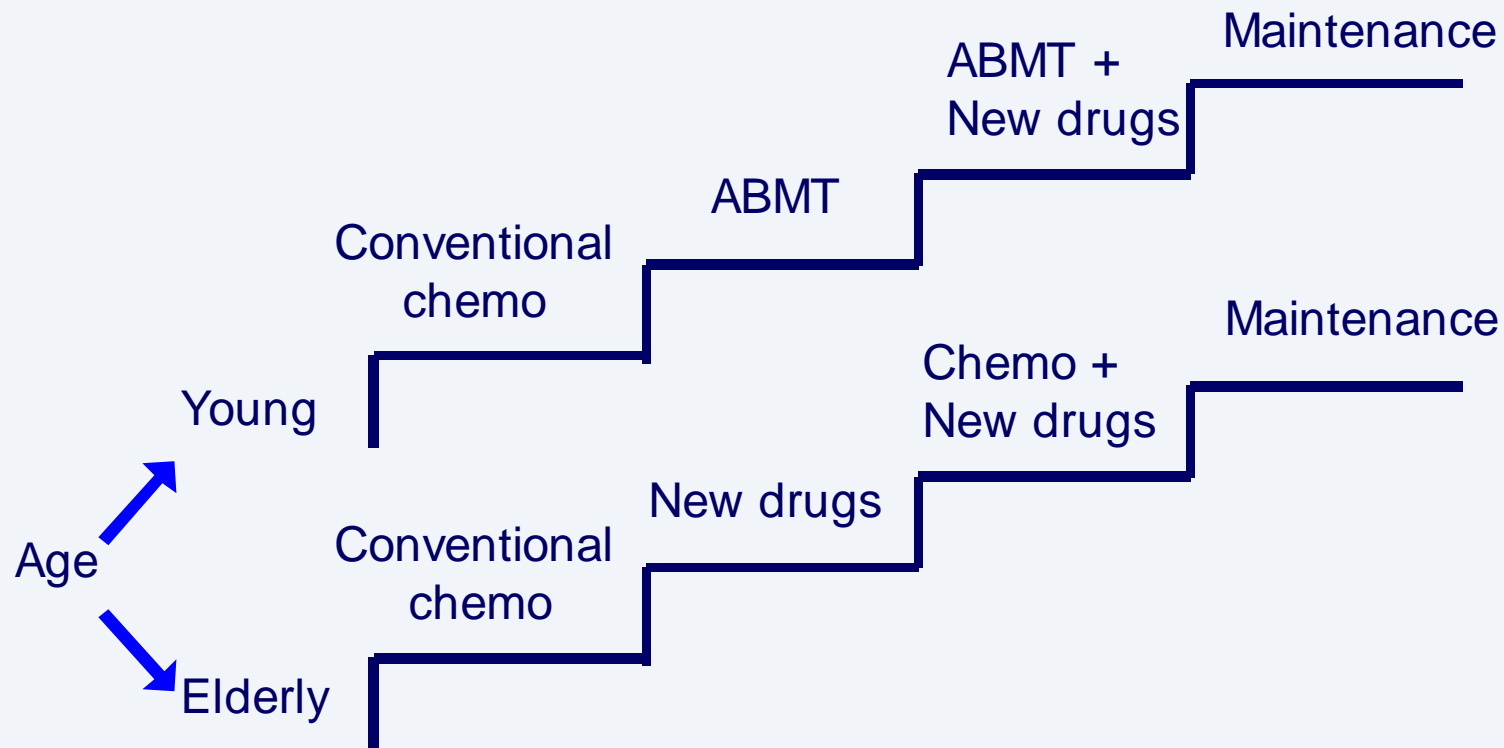
Mario Boccadoro

University of Turin and San Giovanni
Hospital, Turin, Italy

This is a Celgene meeting

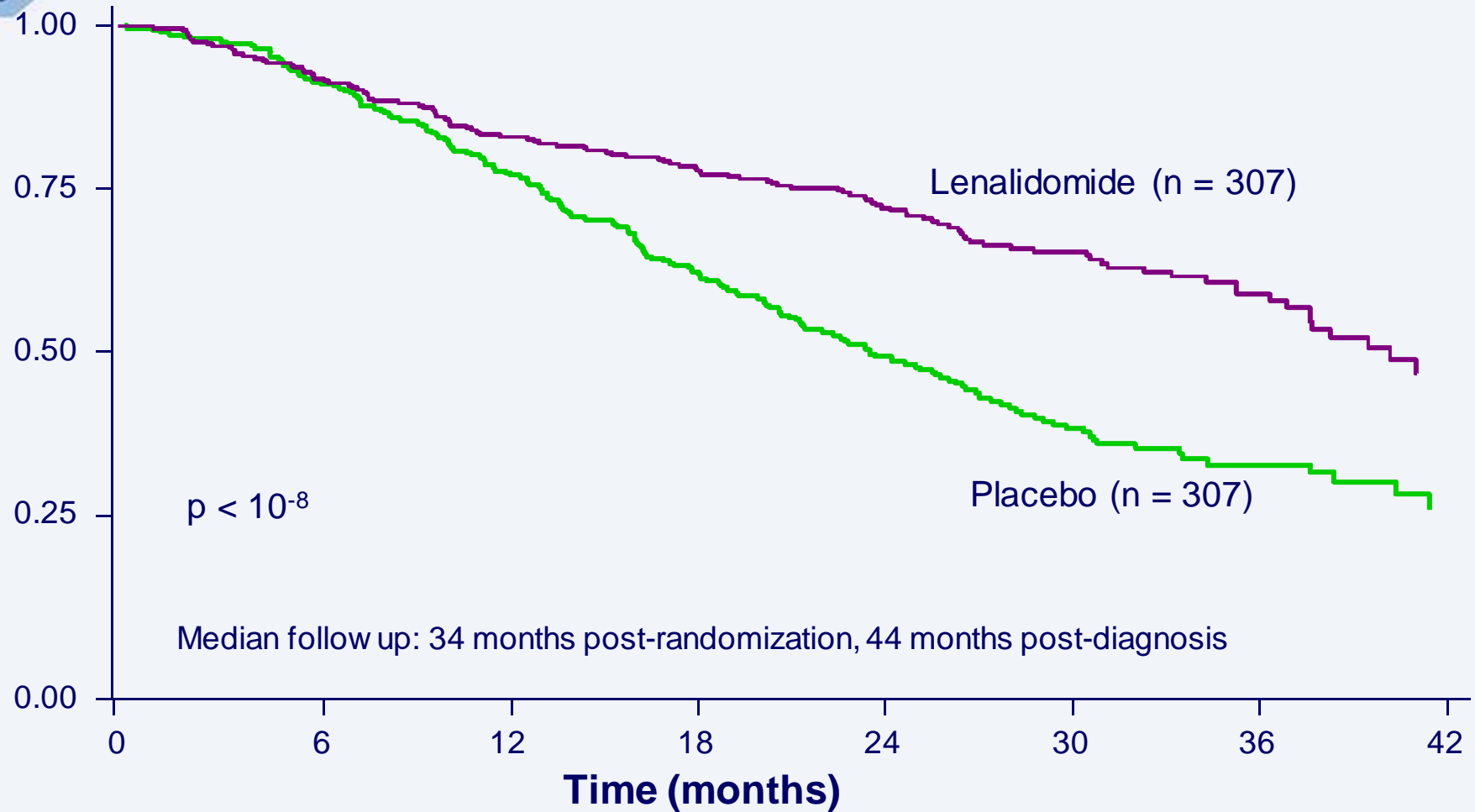


The changing dynamic of multiple myeloma treatment



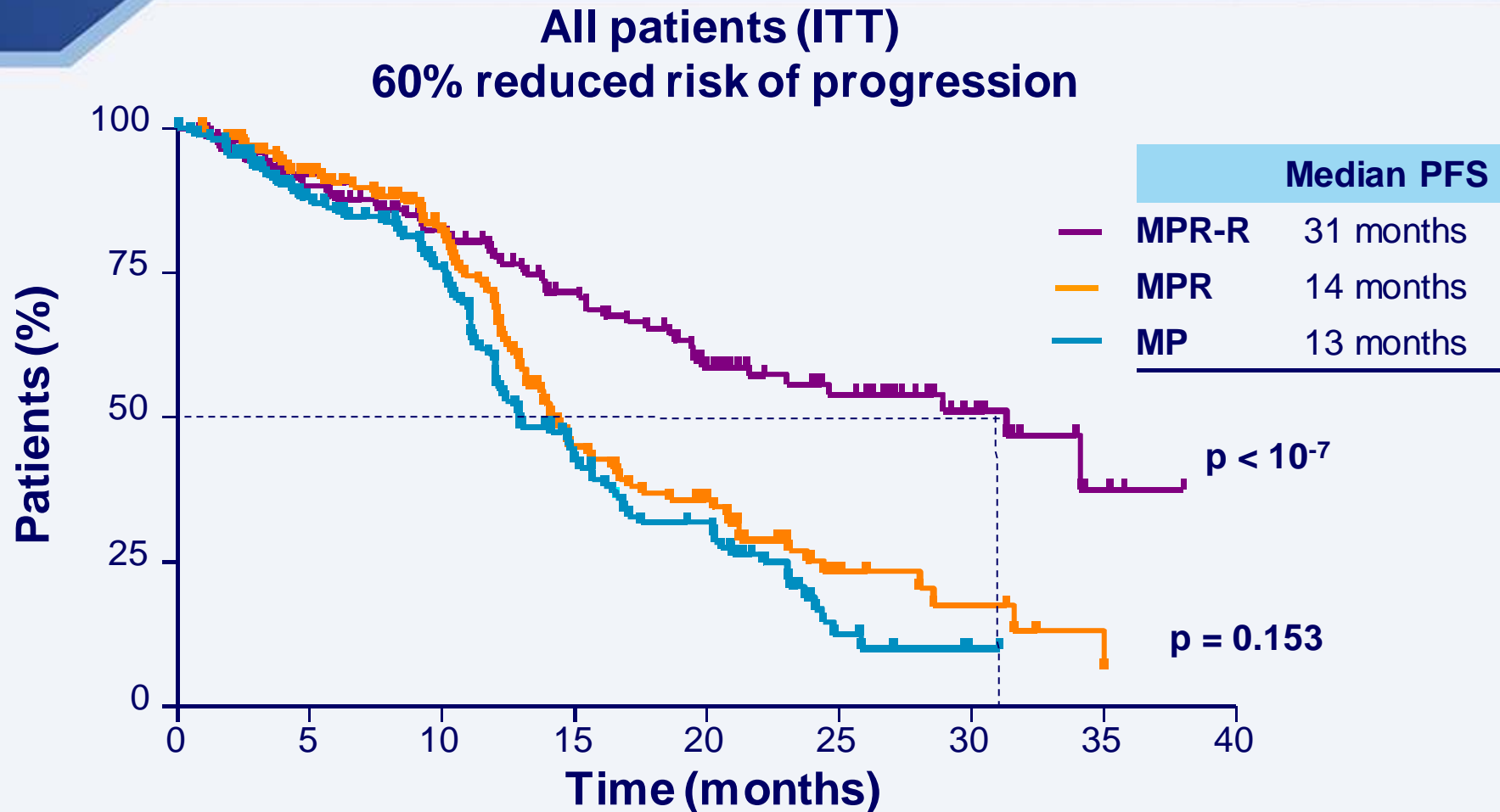
ABMT = autologous bone marrow transplant.

PFS significantly improved with lenalidomide maintenance



Attal M, et al. Blood. 2010;116:[abstract 310]. Updated data presented at ASH 2010.

Improved PFS in all patients

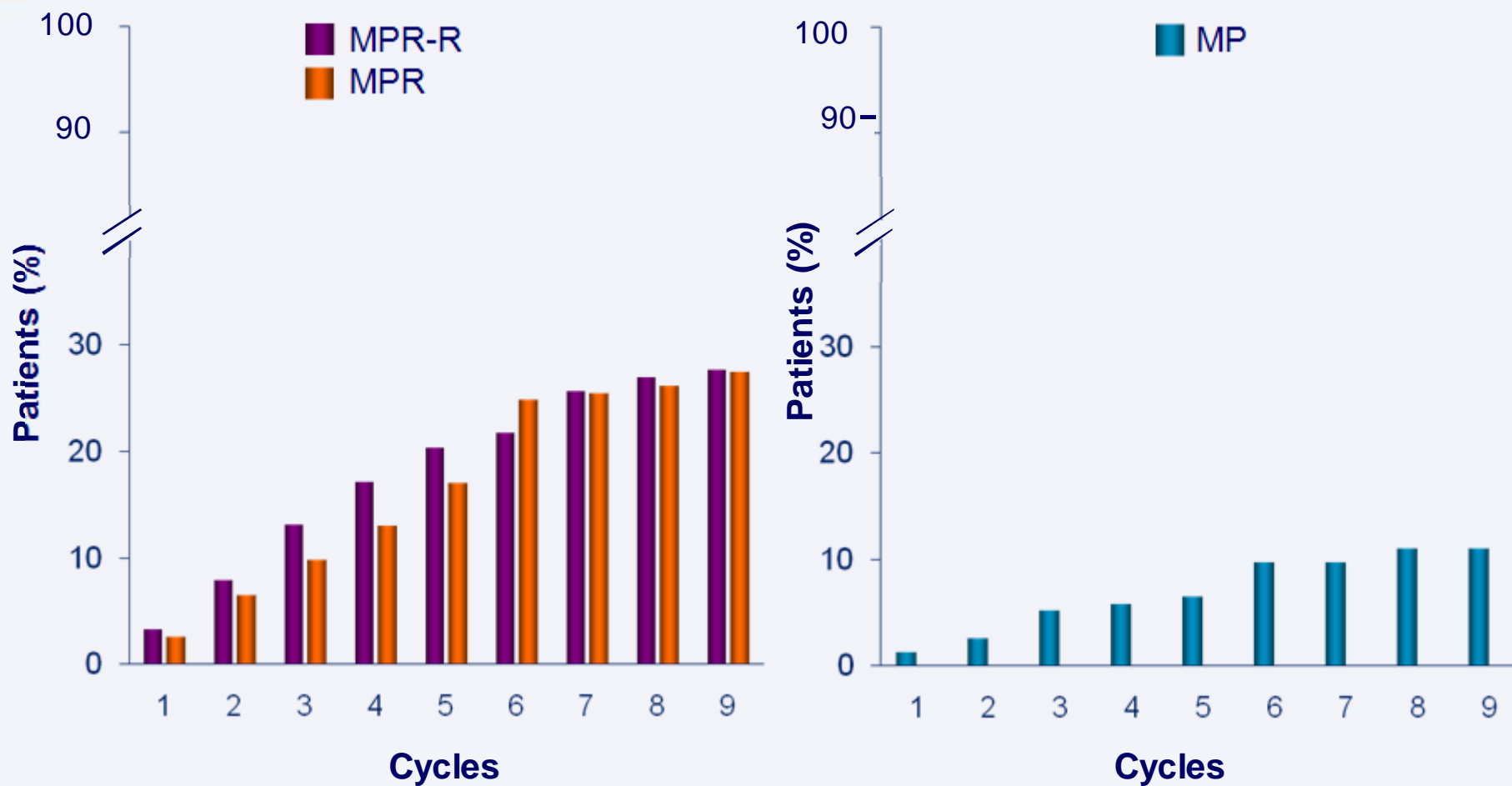


Median follow-up 25 months

*Analysis based on data up to May 2010.

Palumbo A, et al. Blood. 2010;116:[abstract 622]. Updated data presented at ASH 2010.

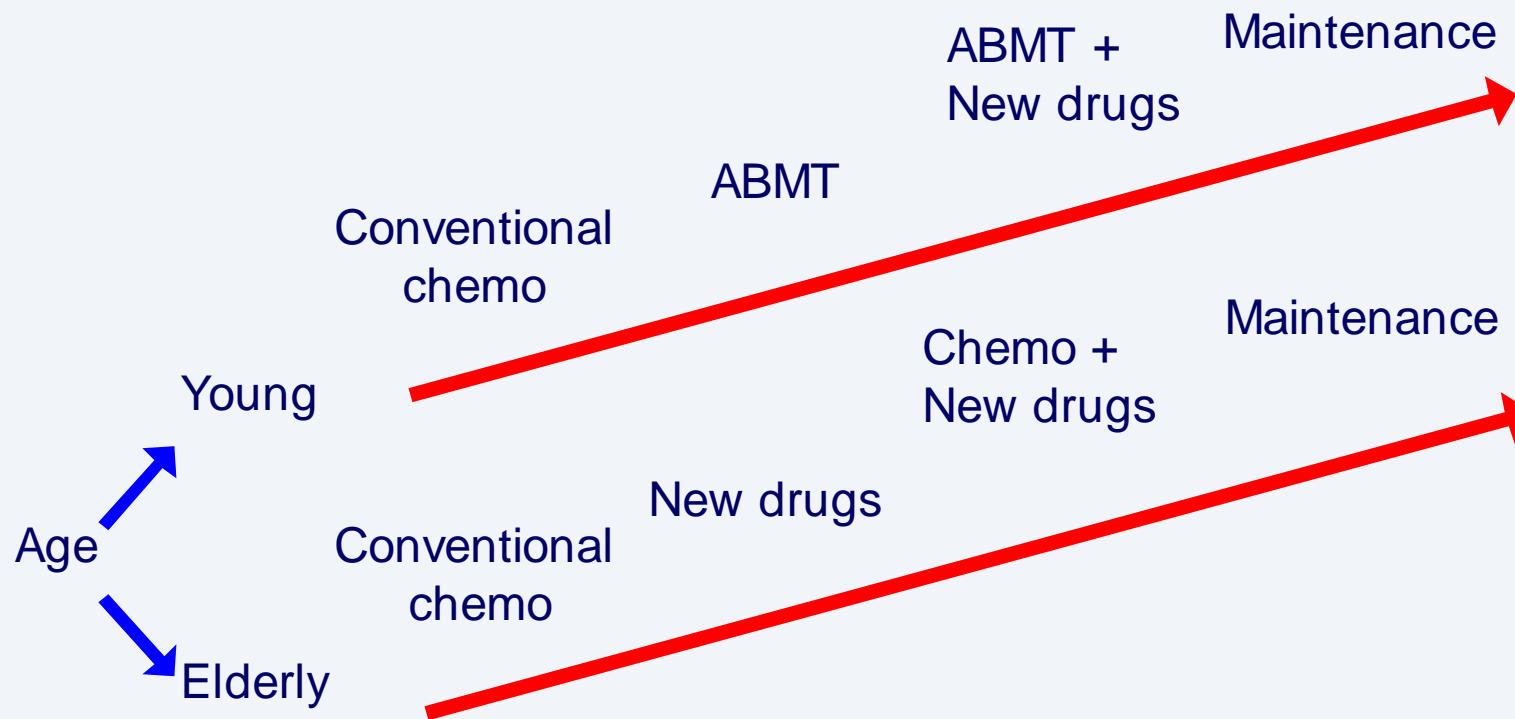
Response improves over time \geq VGPR in all patients



Palumbo A, et al. Blood. 2010;116:[abstract 622]. Updated data presented at ASH 2010.

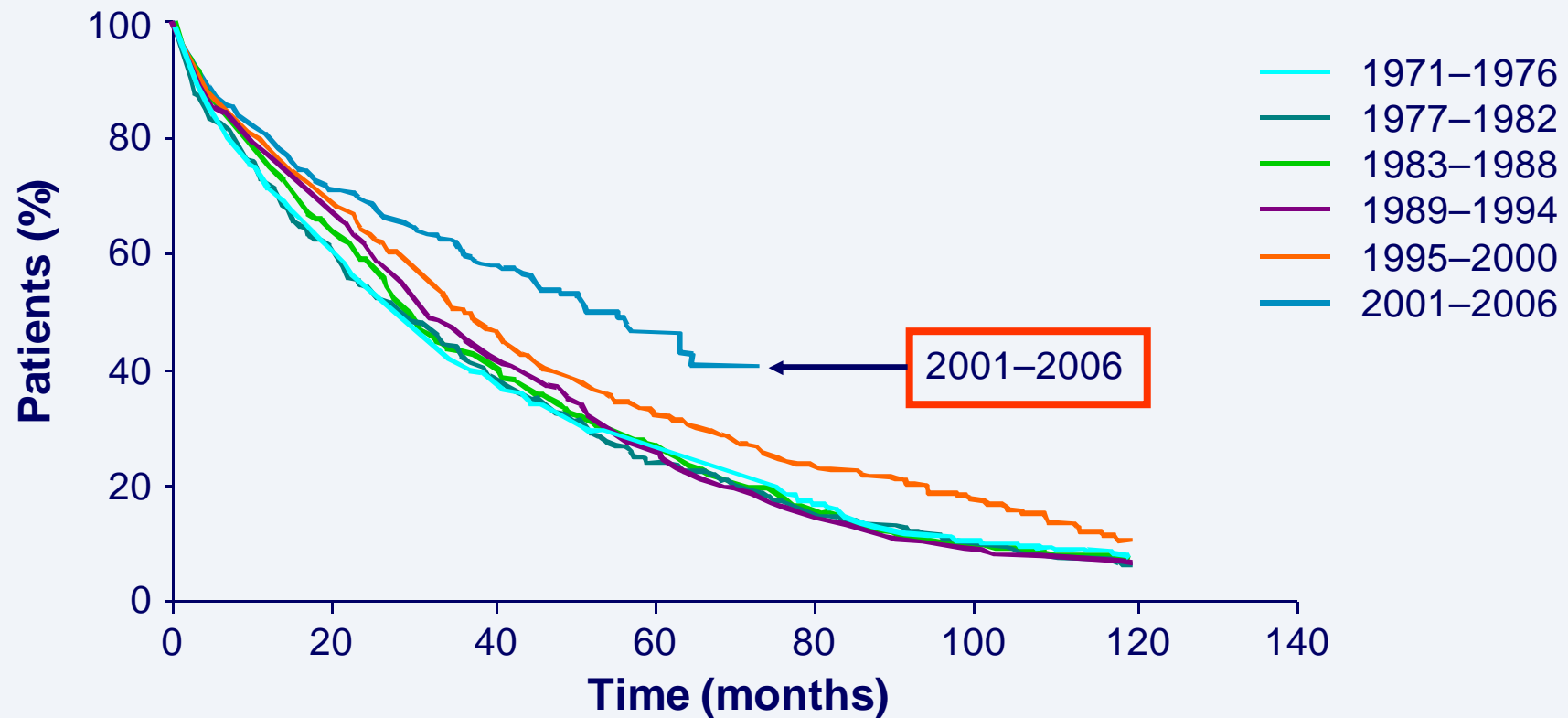
The changing dynamic of multiple myeloma treatment

The continuum of care



Multiple myeloma: the changing dynamic

Overall survival in 5-year intervals from the time of diagnosis



IMW Paris 2011

Plenary abstract session

Declining myeloma mortality rates in the USA following introduction of novel therapies

E. LIBBY, A. EBAID, D. QUINTANA, C. WIGGINS University of New Mexico Cancer Center, ALBUQUERQUE, NM, USA

- Conclusion: the novel agents are contributing to improved survival for myeloma patients of all ages

Future directions in multiple myeloma treatment

- Treatment goals for MM patients in 2011
 - extending survival versus symptom control
- Use of continuous therapy to extend remission duration by targeting the mechanism of disease of MM
- Tailoring treatment according to patient status
 - differentiating treatment for frail elderly patients
- New agents and new classes of agents in development to improve patient outcomes

The continuum of care for the multiple myeloma patient

- 10:30–10:45** **The changing dynamic of multiple myeloma treatment**
M. Boccadoro (Italy)
- 10:45–11:05** **Mechanisms of action and disease: intercellular events and immunomodulation**
S. Lentzsch (USA)
- 11:05–11:25** **Mechanisms of action and disease: immune synapse**
D.M. Davis (UK)
- 11:25–11:45** **Optimizing current therapeutic options for relapsed/refractory multiple myeloma**
M.A. Dimopoulos (Greece)
- 11:45–12:05** **The evidence supporting continuous therapy in multiple myeloma**
S. Giralt (USA)
- 12:05–12:25** **From bench to bedside: combination regimens in the present and future management of multiple myeloma**
K.C. Anderson (USA)



The Continuum of Care for the Multiple Myeloma Patient

Wednesday 4 May 2011
10:30–12:30
Paris, France



A Celgene-sponsored satellite symposium
at the 13th International Myeloma Workshop

