

Newly diagnosed myeloma < 66 years IFM / DFCl prospective study

Pr Philippe Moreau
on behalf of the IFM/DFCI



« optimal strategy »

Induction therapy

VRD x 3

ASCT

Melphalan
200 mg/m²

Consolidation

VRD x 2

Maintenance

Lenalidomide

**< 66 years, de novo
Pilot trial, IFM 2008-01,
« optimal strategy »**

Induction therapy

VRD x 3

ASCT

Melphalan
200 mg/m²

Consolidation

VRD x 2

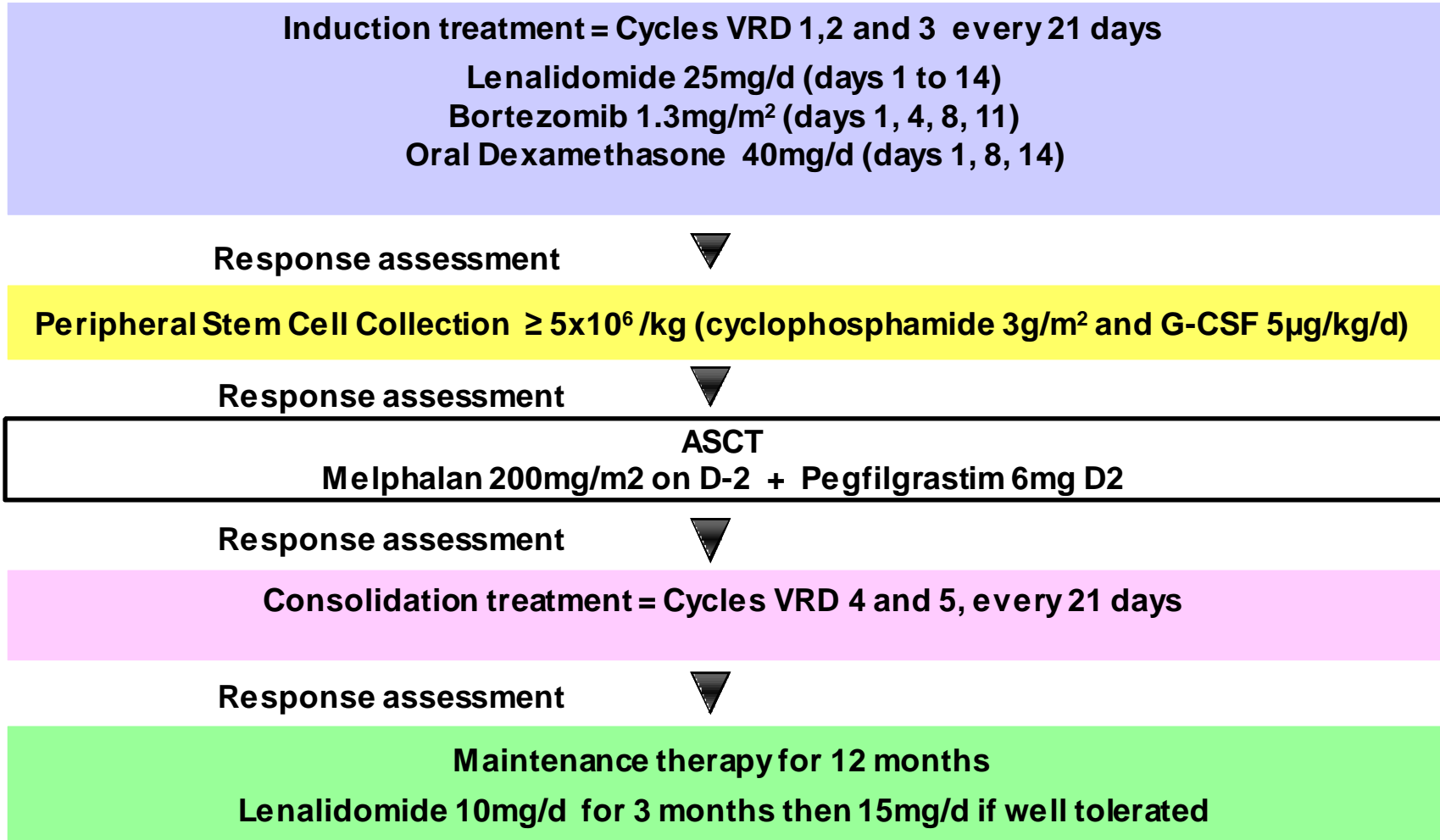
Maintenance

Lenalidomide



STUDY DESIGN

Open-label, multicenter, phase II study
in frontline MM pts < 65 yrs





RESPONSE RATES (ITT)

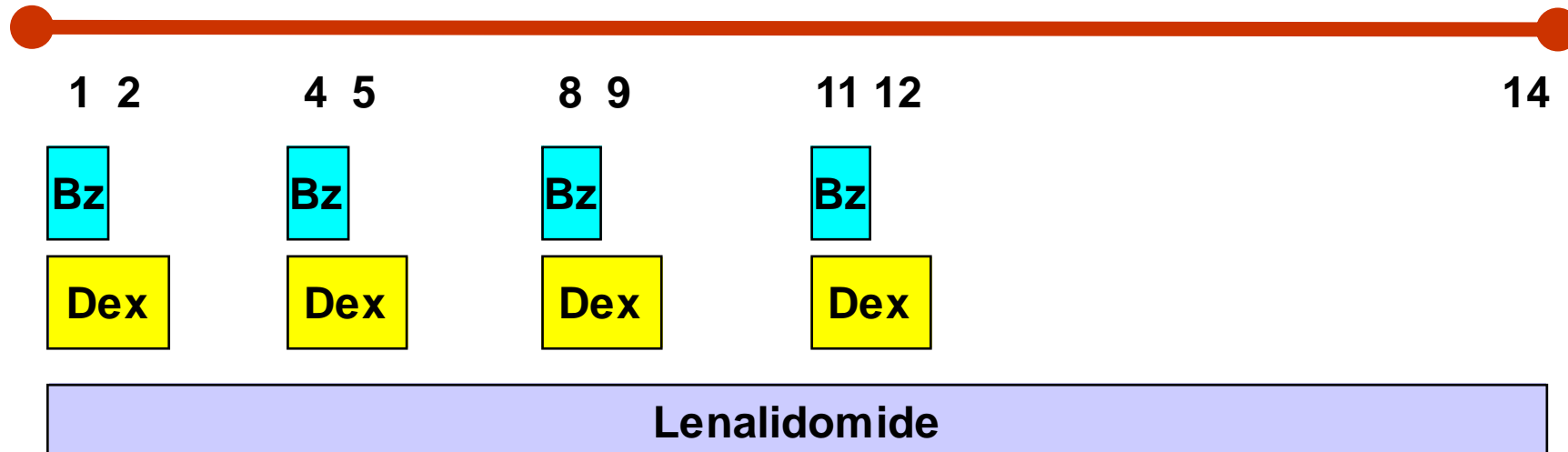
	after Induction		after ASCT		after Consolidation	
	n	%	n	%	n	%
sCR	5	17	10	32	12	38
CR	2	6	3	10	3	10
CR+sCR	7	23	13	42	15	48
VGPR	12	39	8	26	11	36
≥ VGPR	19	62	21	68	26	84
PR	10	32	7	23	3	10
ORR	29	94	28	91	29	94
SD	2	6	2	6	1	3
out of trial	0		1	3	1	3
total	31	100	31	100	31	100

Roussel, ASH 2010

RVD


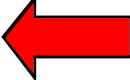
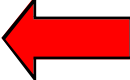
Richardson et al, Blood 2010, online 12 april

Up to eight 21-day cycles

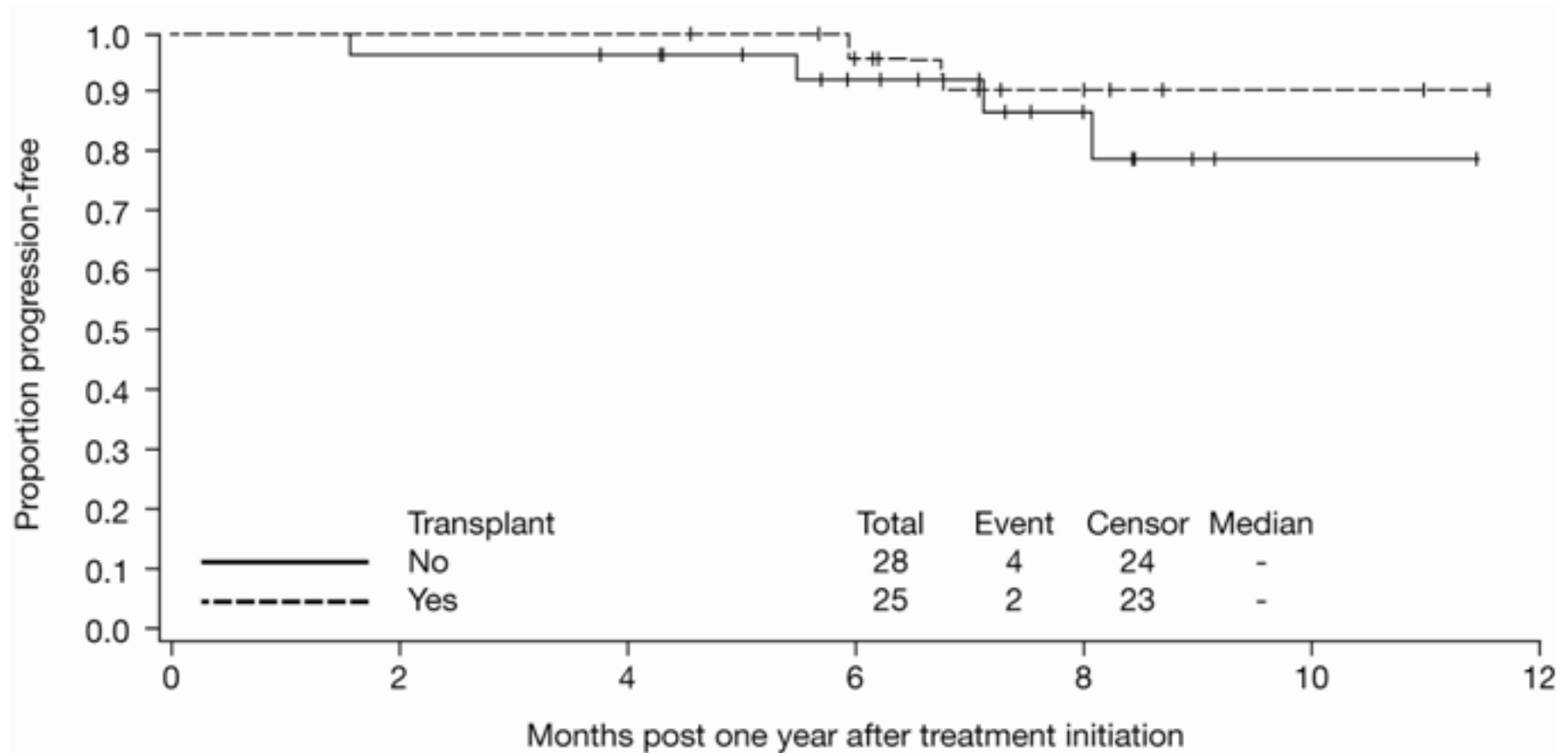


Phase II : Len 25, Btz 1.3, Dex : 20

Best response to treatment overall and in the phase II population

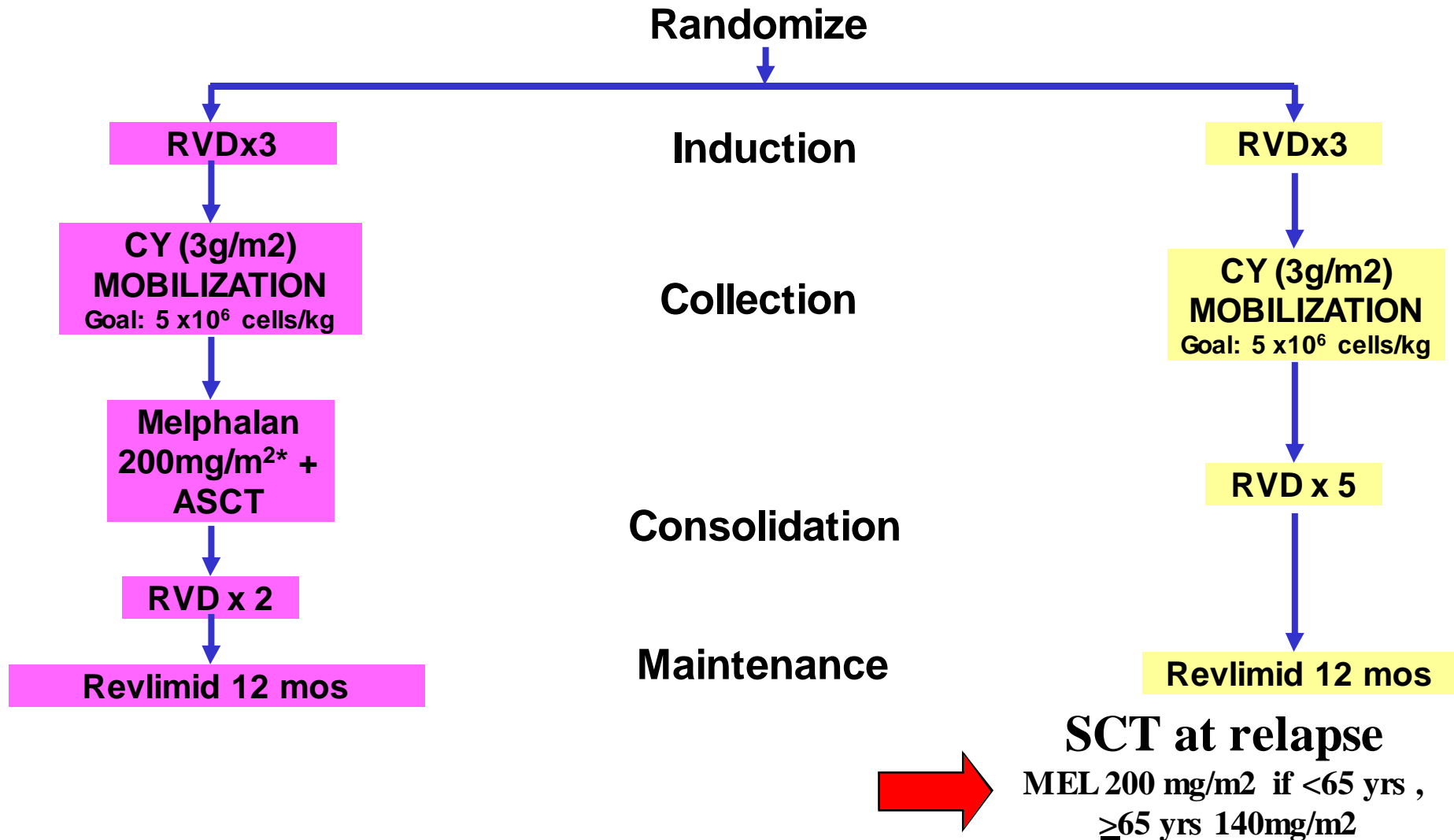
Response, n (%)	All pts (N=66)	Phase II (N=35)
CR	19 (29)	13 (37)
nCR	7 (11)	7 (20)
VGPR	18 (27)	6 (17)
PR	22 (33)	9 (26)
CR+nCR	26 (39)	20 (57) 
CR+nCR+VGPR	44 (67)	26 (74) 
At least PR	66 (100)	35 (100) 

PFS according to receipt of ASCT



Receipt of ASCT did not affect 1-yr PFS ($P = .38$)

IFM/DFCI 2009 Study Newly Diagnosed MM patients

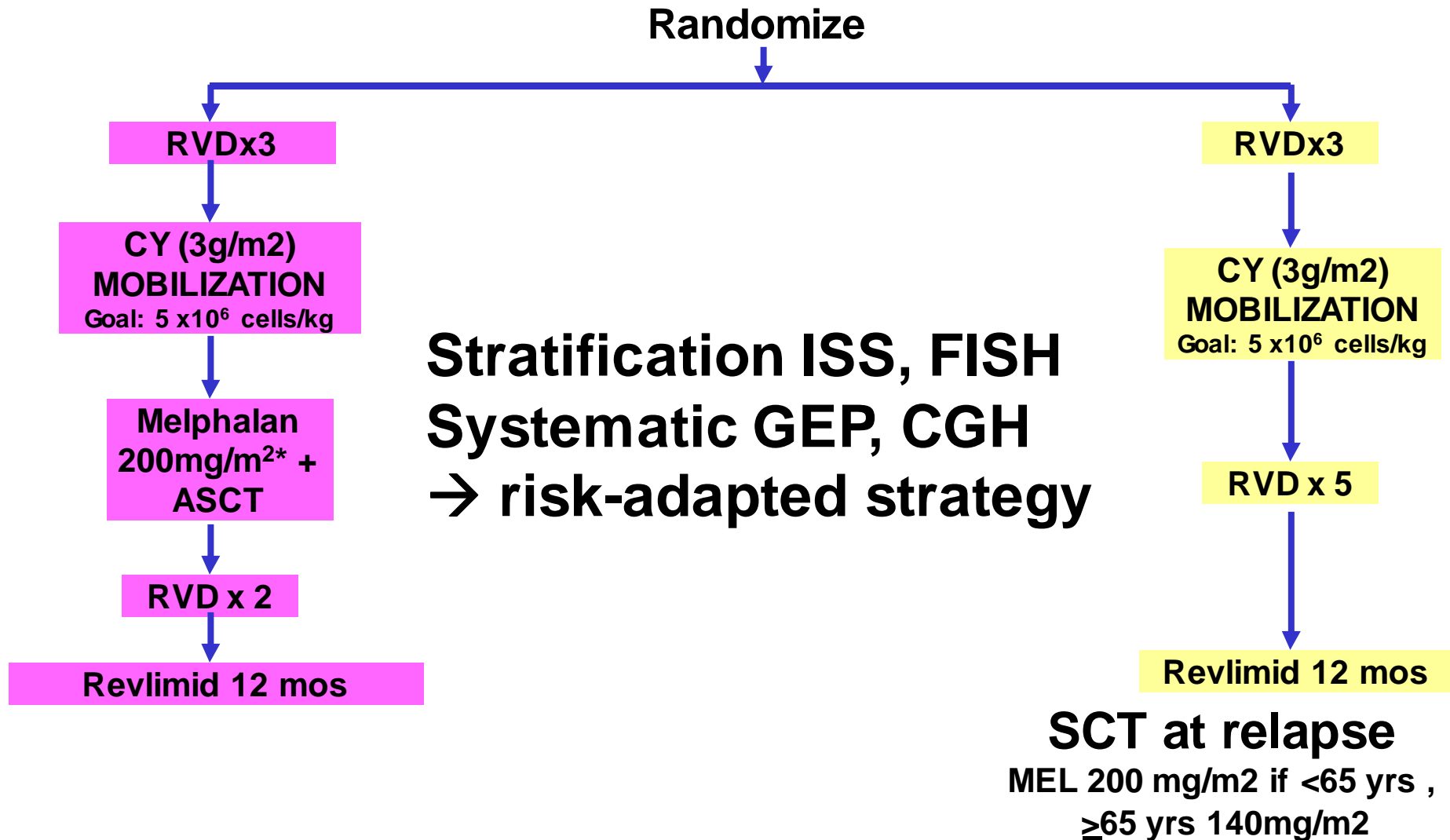


**IFM/DFCI 2009 Study
Newly Diagnosed MM patients**

**Primary end-point:
PFS, 30 months vs 39 months**

1000 patients

IFM/DFCI 2009 Study Newly Diagnosed MM Patients



IFM/DFCI 2009 Study

Newly Diagnosed MM patients

M.Attal

P.Moreau

S.Rollet

C.Mathiot

H.Avet-Loiseau

S.Minvielle

Colleagues from 70 centres

P.Richardson

K.Anderson

N.Munshi

C.Revta

E.Weller

Colleagues from 14 centres

Support: Celgene,
Millenium, Janssen